

Methods for Researching End of Life Care – MORECare

Preston N, Todd C, Grande G, Short V,
Evans C & Higginson I



Methods for evaluating service delivery models in End of Life Care

- End of Life Care research presents its own unique problems.
 - Recruitment
 - Attrition
 - Randomisation
- MRC made a call through the Methodological Research Programme to evaluate this.
- Collaboration between King's College, London, University of Manchester, University of Edinburgh and University of Aberdeen.



Aims

- To identify, appraise and synthesise ‘best practice’ methods for the evaluation of EOLC, particularly focusing on complex service-delivery interventions and reconfigurations.
- To synthesise findings of the reviews and stakeholder consultations to develop guidelines for undertaking evaluation research in EoLC.

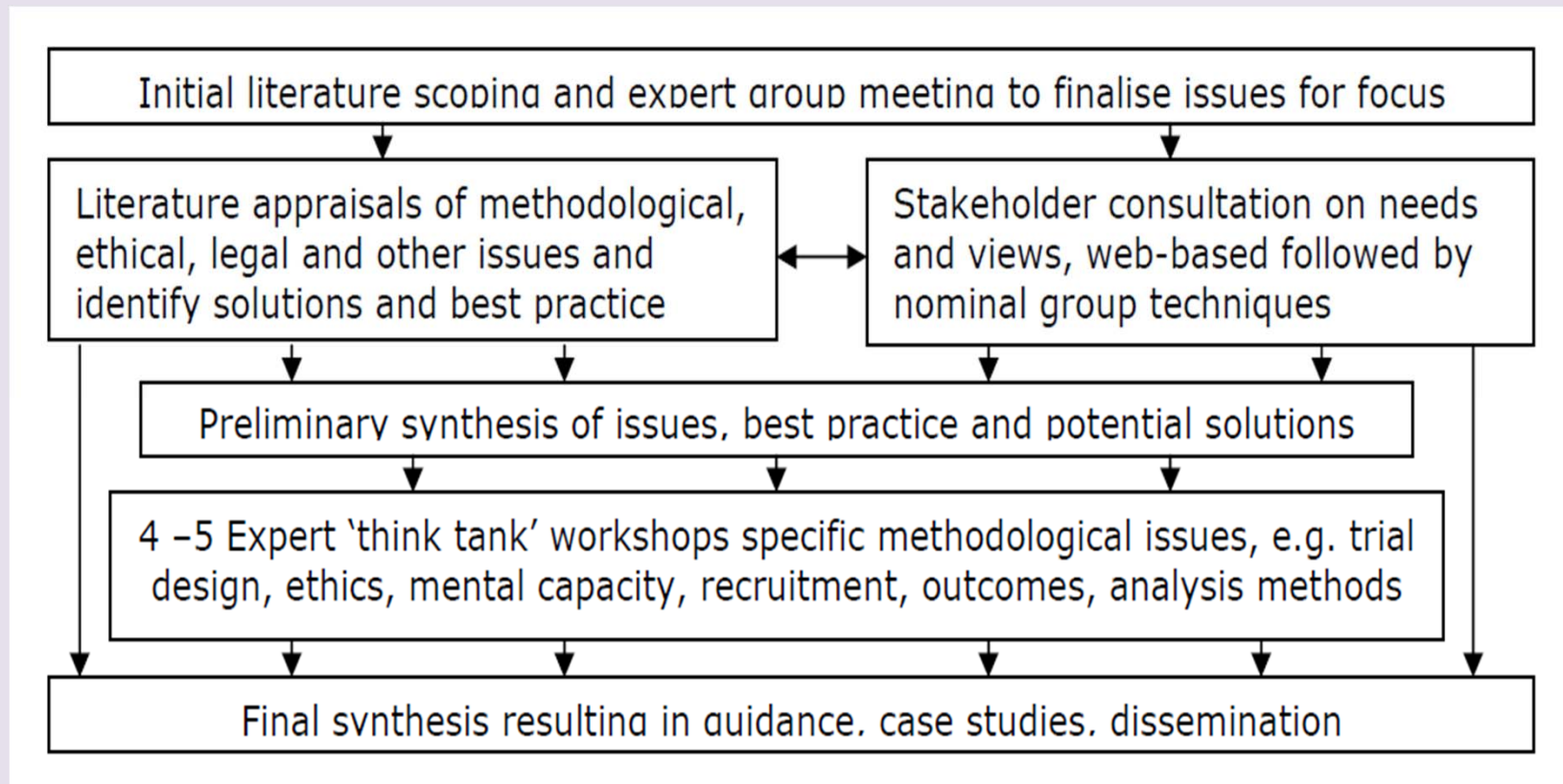


Objectives

- Critical review of current methods.
- Characterise different care settings.
- Identify practical, legal, ethical and methodological issues.
- Appraise the needs of key stakeholders (policy makers, research ethics committees, funders, healthcare professionals, users).
- Evaluate potential solutions to barriers.



Components of the project and how they integrate



5 years
Cancer experiences collaborative

Methods

- Scopes and reviews of the literature.
 - Review of reviews of effectiveness models of service delivery.
 - Attitudes to participation in research.
 - Recruitment to EoLC Studies.
 - Effectiveness of specialist palliative care teams.
- Consensus activities.
 - When there is a lack of clarity or when there is no evidence.
 - Using Nominal Group techniques with Stakeholders and workshops.
 - Using online consultation to clarify guidance.

5 cancer
experiences
collaborative
years

Timetable

- Stakeholder consultations:
 - 12th April 2011 Lancaster Research Partners
 - 9th May 2011 Northwest Commissioners
- Funders survey May 2011
- Expert think tanks
 - 25th May 2011 Health Economics (Manchester)
 - 19th May 2011 Outcomes (Lisbon, EAPC)
 - 9th June 2011 Mixed Methods in Complex interventions (London)
 - 28th June 2011 Ethical Issues (London)
 - TBA Statistical Issues 2011



For more information:

- Come to the MORECare desk.
- <http://www.csi.kcl.ac.uk/morecare.html>
- Contacts:
 - Dr Nancy Preston
nancy.preston@manchester.ac.uk or
 - Dr Catherine Evans
catherine.evans@kcl.ac.uk

Thank you for your time

